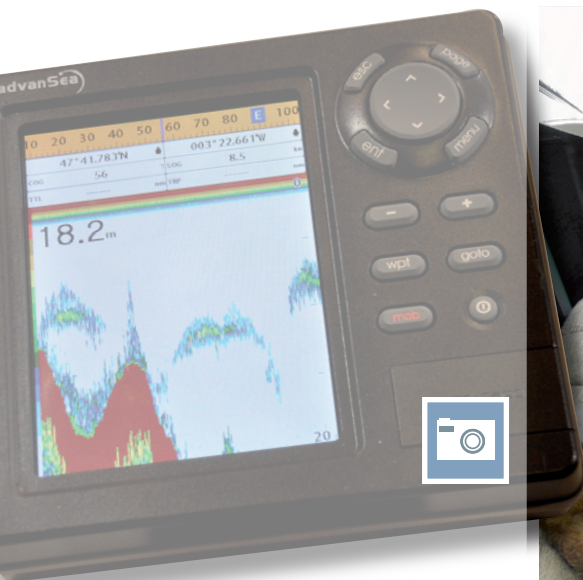


# New Products

Equipment, Systems,  
Materials & Tools



## Plastimo's AdvanSea...

Plastimo has introduced a whole new range of marine electronics under an all-new brand, AdvanSea. It includes a full line of 112x112mm LCD instruments, which includes all the usual depth, log, wind and 'combo' functions. Plus there's an assortment of bigger navigation modules that provide engine-monitoring, chartplotting, fishfinding and so on functionality and all the usual accessories, including GPS antennas and transducers.

Effectively AdvanSea fills the hole in the Navimo Group company's portfolio that was created when its exclusive marketing agreement with Navman broke down a few years ago following the Brunswick Corporation's acquisition of that New Zealand-based operation; and subsequently, of course, Navman was been sold on to Navico. This time Navimo/Plastimo is taking no chances. Although manufacturing is outsourced, it not only owns the AdvanSea brand, but all rights to designs and tooling.

For more, [www.advantsea.com](http://www.advantsea.com).



## Marina Mill's Extex collection...

The next 12 months should see UK specialist textile company Marina Mill significantly expand the scope of its popular Extex portfolio. Being suitable for both interior and exterior use, as well as being Teflon coated, these soft fabrics have proved a bit hit with the yachting industry since the first samples were unveiled back in '02.

There are currently just three standard Extex collections: Mull, which includes 34 shades of plain chenilles, Outline, which includes 21 shades of fine-ribbed chenilles, and Haze with another 21 colours to choose from of a similar, but non-chenille weave. But as said more are on their way. For instance, despite the fact that currently there are no printed Extex collections, we're told to 'watch this space'.

Extex is made of acrylic chenille and polyester fibres in the case of Mull and Outline; and 100 per cent acrylic in the case of Haze collection.

Something like 98 per cent of Extex sales are said to come from the marine industry.

Certainly its superyacht client portfolio is very impressive. The list of recent deliveries includes the likes of *Anastasia*, *Lady Anne*, *Salperton III*, *Pelorus*, *Dubai* and *Kogo* to name but a few. And many more projects past and present are the subject of NDAs (non-disclosure agreements).

And away from the custom sector, Marina Mill produces regular collections for Princess Yachts, as well as supplying Sunseeker, Fairline and Sealine.

The picture here shows interior and exterior Extex chenilles aboard AB Yachts recently launched new flagship, the AB140 *Maria Pia*.

For more, [www.marinemill.co.uk](http://www.marinemill.co.uk).